

LK 840 ThermoMix

TECHNICAL DATA

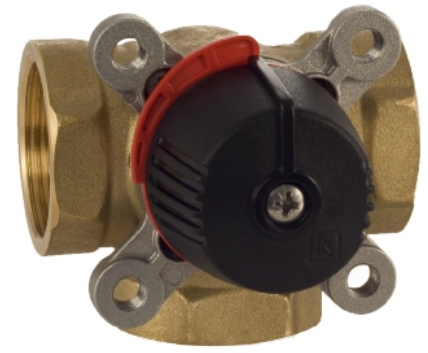
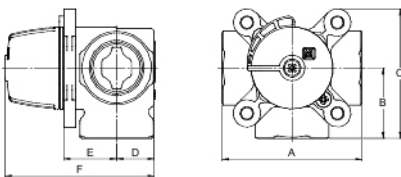
Working temperature	Min. +5°C/Max. +110°C (+120°C briefly)
Ambient temperature	Min. +5°C/Max. +60°C
Max. working pressure	1.0 MPa (10 bar)
Max. pressure difference	50 kPa
Leakage	< 1% of Kvs at 50 kPa
Angle of rotation	90°/360°
Torque	< 1 Nm
Media	Water - Glycol/Ethanol mixture max. 50%
Material, valve body/slide/spindle	Brass EN 12165 CW617N
Material, internal cover	PPS Composite
Material, external cover	Aluminium
Material, O-rings	EPDM
Spindle sealing	Two O-rings

LK 840 ThermoMix is a 3-way valve that can be used as a mixing valve or as a diverting valve in heating systems.

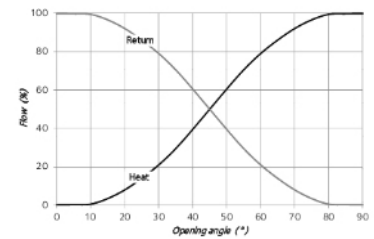
LK 840 ThermoMix is suitable for motorization.

The valve can be mounted at any angle. LK 840 ThermoMix can easily be adapted for right- or left-hand mounting.

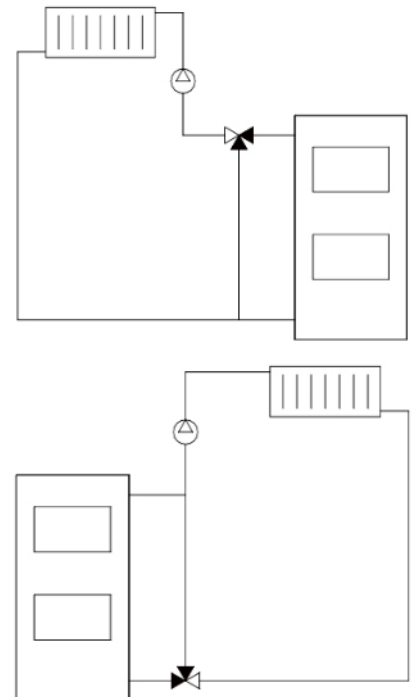
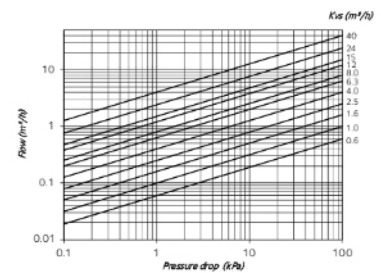
LK 840 - FEMALE THREAD



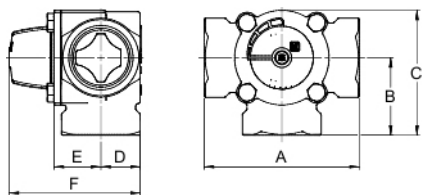
Valve Characteristics



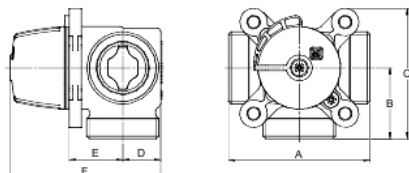
Capacity Diagram



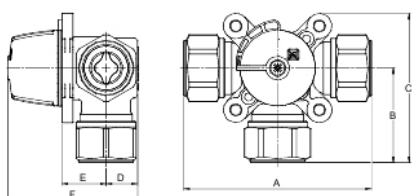
Rp 1½" / Rp 2"



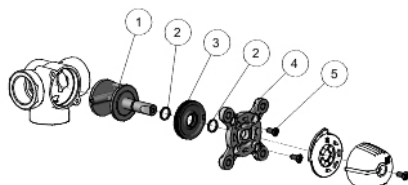
LK 840 - MALE THREAD



LK 840 - COMPRESSION FITTING



SPARE PARTS AND ACCESSORIES



Article number	Kvs m ³ /h	Dim.	A mm	B mm	C mm	D mm	E mm	F mm	Weight kg
181010	0.6	Rp ½"	80	40	75	20	28	82	0.7
181011	1.0	Rp ½"	80	40	75	20	28	82	0.7
181012	1.6	Rp ½"	80	40	75	20	28	82	0.7
180845	2.5	Rp ½"	80	40	75	20	28	82	0.7
180846	4.0	Rp ¾"	80	40	75	20	28	82	0.7
180847	6.3	Rp ¾"	80	40	75	20	28	82	0.7
180848	8.0	Rp 1"	82	41	76	22	31	87	0.8
180849	12	Rp 1"	82	41	76	22	31	87	0.8
180850	15	Rp 1¼"	84	42	77	25	32	91	0.9
181196	24	Rp 1½"	118	59	95	30	36	100	2.1
181197	40	Rp 2"	127	63.5	100	35	40	109	2.4

The valve is also available with the spindle rotated 180° (design E). For more information please contact our Sales Department.

Article number	Kvs m ³ /h	Dim.	A mm	B mm	C mm	D mm	E mm	F mm	Weight kg
180851	2,5	G ¾"	80	40	75	20	28	82	0.7
180852	4,0	G 1"	80	40	75	20	28	82	0.7
180853	6,3	G 1"	80	40	75	20	28	82	0.7
180854	8,0	G 1¼"	82	41	76	22	31	87	0.8
180855	12	G 1¼"	82	41	76	22	31	87	0.8
180856	15	G 1½"	84	42	77	24	32	90	0.9

Article number	Kvs m ³ /h	Dim.	A mm	B mm	C mm	D mm	E mm	F mm	Weight kg
180857	2.5	15 mm	114	57	92	20	28	82	0.8
180858	2.5	18 mm	114	57	92	20	28	82	0.8
180859	2.5	22 mm	114	57	92	20	28	82	0.8
180893	6.3	22 mm	87	44	78	20	28	82	0.8
180860	4.0	28 mm	120	60	95	20	28	82	0.8
180861	6.3	28 mm	120	60	95	20	28	82	0.8

Spare parts and Accessories

Article number	Article	Included components
187066	Sealing kit 840/841, DN 15-20	2, 3 and 5
187067	Sealing kit 840/841/842, DN 25-32	2, 3 and 5
187078	Sealing kit 840/841, DN 40-50	2, 3 and 5
187068	Repair kit 840, DN 15-20	1-5
187070	Repair kit 840, DN 25-32	1-5
187079	Repair kit 840, DN 40-50	1-5